

# **CATALOGUE**

**ione**<sup>®</sup>

[www.ione.com.tw](http://www.ione.com.tw)



***ACOUSTIC***



# AQUARIUS-01BT

WIRELESS ACTIVE NOISE CANCELING  
IN EAR HEADPHONES (NECKBAND STYLE)



## FEATURES

- 13mm Hi-Resolution dynamic drivers build with special tuning Bio-Cell diaphragm
- YMU 831 crafted tuning 3D surround audio EQ (IONE LISTEN APP)
- Implement YMU 831 Active Noise Canceling technology and Hearing Through mode control



# AQUARIUS-01C

HI-FI IN EAR HEADPHONES



## FEATURES

- 13mm Hi-Resolution dynamic drivers build with special tuning Bio-Cell diaphragm
- Unique chequered flag design
- Extra conform shark fin tips (S / M / L)
- In-line microphone, media and call control





# AQUARIUS-02BT

BLUETOOTH LDAC

ACTIVE NOISE CANCELLING HEADPHONES



## FEATURES

- 40mm Hi-Resolution dynamic drivers
- Support LDAC Hi-Resolution Bluetooth Audio Codec
- YMU 831 high performance DSP
- Active noise cancelling and hearing through technology
- Customize spatial audio EQ with Android / IOS app.
- Up to 15 Hrs continuous music playback w/o ANC on



# AQUARIUS-02BT-PRO

WIRELESS HYBRID ACTIVE NOISE  
CANCELLING HEADPHONES



## FEATURES

- 40mm Hi-Resolution dynamic drivers build with special tuning titanium diaphragm
- Qualcomm 5144 SOC advanced Bluetooth chipset
- Support aptX adaptive Bluetooth audio codec
- Qualcomm Active Noise cancelling technology
- Ultra low latency game mode



# AQUARIUS-03BT

BLUETOOTH LDAC

ACTIVE NOISE CANCELLING HEADPHONES



## FEATURES

- 40mm Hi-Resolution dynamic drivers
- Support LDAC Hi-Resolution Bluetooth Audio Codec
- YMU 831 high performance DSP
- Active noise cancelling and hearing through technology.
- Customize spatial audio EQ with Android / IOS app.
- Up to 15 Hrs continuous music playback w/o ANC on



# AQUARIUS-03C

HI-RESOLUTION GAMING HEADSETS



## FEATURES

- 50mm Hi-Resolution dynamic drives build with special tuning titanium diaphragm
- 1.8m detachable 3.5mm connector cable
- Detachable Uni-Directional microphone that filters out unwanted noise





# AQUARIUS-03S

DTS HEADPHONE X 2.0 GAMING HEADSET



## FEATURES

- 50mm Hi-Resolution dynamic drivers
- DTS / Mic mute / Volume control dock
- DTS Headphone X surround sound
- RGB LED ring lighting effect
- Detachable uni-directional microphone
- Foldable carrying design



# AQUARIUS-03SG

2.4GHZ DTS HEADPHONE X 2.0  
GAMING HEADSET



## FEATURES

- 50mm Hi-Resolution dynamic drivers
- DTS Headphone X 2.0 surround sound
- Sound Unbound Spatial Audio
- RGB LED lighting effect
- Detachable uni-directional microphone
- Foldable carrying design



# AQUARIUS-07

LIGHTWEIGHT GAMING HEADSETS



## FEATURES

- 50mm dynamic drivers with Neodymium magnet
- Natural and transparent sound for great direction pinpoint
- Extreme comfortable ear cushions and head pad
- Omni-Directional microphone
- Foldable easy carry design



# AQUARIUS-08C

ANALOG DUAL-CHAMBER GAMING HEADSETS



## FEATURES

- 50mm gaming-grade dynamic drivers
- Dual bass-enhance acoustic chamber
- Build-in Mic mute button and volume wheel.
- Detachable uni-directional microphone





# AQUARIUS-08S

2.4GHZ DTS HEADPHONE X 2.0  
GAMING HEADSET



## FEATURES

- 50mm gaming-grade dynamic drivers
- DTS Headphone X 2.0 surround sound
- Sound Unbound Spatial Audio
- RGB LED ring lighting effect
- Detachable uni-directional microphone
- Foldable carrying design



# AQUARIUS-08SG

WIRELESS DTS X 2.0 SURROUND  
GAMING HEADSETS



## FEATURES

- 40mm Hi-Resolution dynamic drivers build with special tuning titanium diaphragm
- Ultra low latency 2.4GHz wireless connection
- DTS Headphone X 2.0 virtual surround sound
- On the fly Chat / Game balance control.
- Detachable 1.8m detachable 3.5mm connector cable
- Detachable Uni-Directional microphone



# AQUARIUS-08ULL

BLUETOOTH ULTRA-LOW LATENCY  
GAMING HEADSETS



## FEATURES

- 40mm gaming-grade dynamic drivers
- Bluetooth ultra-Low latency solution with proprietary dongle
- Build-in Mic mute button and volume wheel
- BT mode compatible with IOS / Android / Windows / MAC OS.
- Dongle mode compatible with PS / Switch / Android / Xbox (optional)



# AQUARIUS-11BT

MODULAR BLUETOOTH AUDIO GLASSES



## FEATURES

- World smallest MEMS microspeaker
- Dual-Microphones with AI noise reduction
- One tap touch control
- Modular design compatible with Soundcoreaudio glasses
- 5.5 Hrscontinues music playback
- Low latency gaming mode
- IPX4 Water resistance





# F-07-ANALOG

ANALOG STEREO GAMING HEADSETS



## FEATURES

- Enhanced Sound Performance
- 50 mm dynamic driver
- Bendable / Adjustable Uni-directional Microphone
- Extra comfort soft cushion design



## F-07-USB

USBVIRTUAL SURROUND SOUND  
GAMING HEADSETS



### FEATURES

- Enhanced Sound Performance
- 50 mm dynamic driver
- Bendable / Adjustable Uni-directional Microphone
- Extra comfort soft cushion design
- 7.1 virtual surround sound effect
- RGB illumination



# MS-01

WIRELESS HIGH PERFORMANCE  
CONFERENCE SPEAKER



## FEATURES

- USB / Bluetooth 5.2 dual connectivity
- Qualcomm 3044 SOC Bluetooth chipset
- Inelligo high performance Environment Noise Cancelling chipset
- AEC / AGC / Full duplex communication technology
- Up to 8 Hrs continuous playback

**ione®**

**MS-06**

USB STREAMING CONDENSER MICROPHONE



## FEATURES

- 24-bit 48 kHz crystal-clear voice recording
- 3.5mm headphone monitor jack
- 4 recording patterns: Stereo / Cardioid / Bi-Directional / Omi-Directional
- Game Chat balance volume control
- USB plug & play





# MS-07

## BLUETOOTH PORTABLE CONFERENCE SPEAKER



### FEATURES

- USB / Bluetooth 5.2 dual connectivity
- Portable light weight design
- Inelligo high performance Environment Noise Cancelling chipset
- AEC / AGC / Full duplex communication technology
- Up to 10 Hrs continuous playback



# MS-08S

## USB-C CONFERENCE SPEAKER DOCKING



## FEATURES

- 8-in-1 multi-function docking
- Dual Power Mode, Power input up to 100W
- Single 4K@60/Dual 4K@30Hz
- AEC / ENC / AGC/ Double Talk
- Small form factor with light weight design



# PAR-01

## ENTERTAINMENT AR GLASSES



### FEATURES

- 200-inch wide screen display in 6m
- Under 60g, light weight module design
- 2 AI beam-forming microphones
- Prescription lens mount
- 3 size adjustable nose pad
- Lens cover for better Video entertainment



***WIRELESS***





# SCORPIUS-M15SBLBT

ULTRA-SLIM BACKLIT BLUETOOTH WIRELESS  
MECHANICAL KEYBOARD



## FEATURES

- Bluetooth 5.1 Technology, Low latency and high efficiency
- Slim and minimalistic design equip with chocolate style keycaps
- Ultra-Low profile mechanical switch
- Easy-shift function, connect and switch up to 4 Bluetooth devices
- Up to 64 hours continuous operation time on a single charge (Backlit Off)
- Single Blue LED backlit with lighting effect and brightness control



# SCORPIUS-M21SBTG

WIRELESS HOME ENTERTAINMENT  
AIO MECHANICAL KEYBOARD



## FEATURES

- 2.4GHz / Bluetooth 5.0 dual wireless connectivity
- Gamepad / Touch pad / Keyboard all in one design
- Ultra-low profile mechanical switch.
- Compatible with Android TV



# LYNX-W11BT

BLUETOOTH WIRELESS OPTICAL MOUSE



## FEATURES

- 1200 DPI optical sensor
- Bluetooth 4.0 connectivity
- Slim and minimalistic design
- Extreme light weight for easy carrying
- Up to 120 hours continuous operation battery life on a single AA battery



# LYNX-W11BTG

2.4G / BLUETOOTH DUAL MODE  
WIRELESS OPTICAL MOUSE



## FEATURES

- Bluetooth 5.0 Technology, Low latency and high efficiency
- 2.4G / Bluetooth 5.0 dual wireless connectivity mode
- 1200 DPI optical sensor
- Slim and minimalistic design
- Extreme light weight for easy carrying





# LYNX-W11RF

2.4G WIRELESS OPTICAL MOUSE



## FEATURES

- 1200 DPI optical sensor
- 2.4G wireless connectivity
- Slim and minimalistic design
- Extreme light weight for easy carrying
- Up to 120 hours continuous operation battery life on a single AA battery
- Automatic sleep function for power saving



# LYNX-W12BTG

2.4G / BLUETOOTH DUAL MODE  
WIRELESS TRACKBALL MOUSE



## FEATURES

- Bluetooth 5.0 Technology, Low latency and high efficiency
- 2.4G / Bluetooth 5.0 dual wireless connectivity mode
- 5 DPI levels control, 2400 / 2000 / 1600 / 1200 / 800 DPI
- Optical sensor for smooth and precise tracking
- Ergonomic design to reduce the burden of the wrist



***GAMING***



# SCORPIUS-M9SBL

SINGLE LED BACKLIT  
GAMING MECHANICAL KEYBOARD



## FEATURES

- 5 profile settings / 6 presets LED mode / 5 levels brightness adjustment
- 4M bit onboard memory
- 2 x high speed USB 2.0 pass-through hub
- Headphone (in) and microphone (out) jacks
- PC / Game mode with windows key disabled function
- Detachable large size wrist pad





# SCORPIUS-M9SFL

RGB LED BACKLIT  
GAMING MECHANICAL KEYBOARD



## FEATURES

- 16.8 million RGB LED backlit with 5 levels brightness and 8 LED mode adjustment
- 4M bit onboard memory
- 2 x high speed USB 2.0 pass-through hub
- Headphone (in) and microphone (out) jacks
- PC mode / Game mode with windows key disabled feature
- Detachable large size wrist pad



# SCORPIUS-M10TBL

SINGLE LED BACKLIT TENKEYLESS  
MECHANICAL GAMING KEYBOARD



## FEATURES

- 5 Profile settings / 6 presets LED Mode / 5 Levels brightness adjustment
- 4M bit onboard memory
- Instant onboard macro and LED lighting recording
- PC / Game mode with windows key disable function
- Compact Tenkeyless Design



# SCORPIUS-M10TSFL

RGB LED BACKLIT TENKEYLESS  
MECHANICAL GAMING KEYBOARD



## FEATURES

- 16.8 million RGB LED backlit with 5 levels brightness and 7 lighting effects mode adjustment
- 4M bit onboard memory
- Instant onboard macro and LED lighting recording
- PC mode / Game mode with windows key disabled feature
- Compact Tenkeyless Design



# SCORPIUS-M11SFL

RGB LED BACKLIT LOW PROFILE  
MECHANICAL KEYBOARD



## FEATURES

- 16.8 million RGB LED backlit with 5 levels brightness and 7 lighting effects mode adjustment
- Minimalistic SPCC Steel body with optimized low-profile keycaps design
- Kailh Low-Profile switch
- 512KB onboard Memory
- Instant onboard Macro and LED lighting recording
- Detachable braided Mini USB to USB-A cable





# SCORPIUS-M12BT

BLUETOOTH MECHANICAL KEYBOARD



## Features

- Bluetooth / USB dual connectivity
- Pairing up to 4 BT host devices
- Rechargeable li-polymer battery
- Single color LED backlit with adjustable 5 levels brightness



# SCORPIUS-M12SBL

SINGLE LED BACKLIT GAMING  
MECHANICAL KEYBOARD



## FEATURES

- 5 profile settings / 6 presets LED mode / 5 levels brightness adjustment
- 4M bit onboard memory
- Instant onboard macro and LED lighting recording
- PC / Game mode with windows key disabled function



# SCORPIUS-M12SFL

RGB LED BACKLIT GAMING  
MECHANICAL KEYBOARD



## FEATURES

- 16.8 million RGB LED backlit with 5 levels brightness and 7 LED mode adjustment
- 4M bit onboard memory
- Instant onboard macro and LED lighting recording
- PC mode / Game mode with windows key disabled feature



# SCORPIUS-M15BT

BLUETOOTH ELEGANT SLIM TYPE  
MECHANICAL KEYBOARD



## FEATURES

- Bluetooth 3.0 Technology
- Up to 4 Bluetooth devices, and easily switch between them
- Elegant Slim Design Keyboard
- 20 Million Actuation on Key Switch
- Embedded Multimedia Keys





# SCORPIUS-M15SFL

RGB LED Backlit Ultra-Slim  
Mechanical Gaming Keyboard



## FEATURES

- 16.8 million RGB LED backlit with 5 levels brightness and 6 lighting effects mode adjustment
- Equip with chocolate style keycaps
- Ultra-Low prole mechanical switch with 20 million keystroke life span
- Instant onboard Macro and LED lighting recording
- PC mode / Game mode with windows key disabled feature



# SCORPIUS-M17SBL

SINGLE LED BACKLIT TENKEYLESS  
MECHANICAL GAMING KEYBOARD



## FEATURES

- 5 Profile settings / 6 presets LED Mode / 5 Levels brightness adjustment
- 4M bit onboard memory
- Instant onboard macro and LED lighting recording
- PC / Game mode with windows key disable function
- Compact Tenkeyless Design



# SCORPIUS-M17SFL

RGB LED BACKLIT TENKEYLESS  
MECHANICAL GAMING KEYBOARD



## FEATURES

- 16.8 million RGB LED backlit with 5 levels brightness and 7 lighting effects mode adjustment
- 4M bit onboard memory
- Instant onboard macro and LED lighting recording
- PC mode / Game mode with windows key disabled feature
- Compact Tenkeyless Design



# SCORPIUS-M18SFL

RGB LED BACKLIT MECHANICAL  
GAMING KEYBOARD



## FEATURES

- 16.8 million RGB LED backlit with 5 levels brightness and 7 lighting effects mode adjustment
- Dedicated speaker mute button and CNC aluminum volume control scroll
- 1 x high speed USB 2.0 pass-through hub
- 4M bit onboard memory
- Instant onboard macro and LED lighting recording





# SCORPIUS-M18-TMR

WIRED TMR MAGNETIC SWITCH  
GAMING KEYBOARD



## FEATURES

- Non-contact analog magnetic switch with TMR sensor
- High sensitivity compare with hall sensor
- 100 levels actuation adjustable from 0.1mm to 4mm
- Ultra-Rapid trigger with press and release control
- Up to 8 keymaps setting in one keystroke
- MX keycaps compatible
- High speed 8K polling rate
- IONE AIO software support



# SCORPIUS-M19S

MULTI-FUNCTIONAL KNOB GAMING  
MECHANICAL KEYBOARD



## FEATURES

- Aluminum anodized switch plate
- Gaming-grade mechanical switch
- RGB LED Backlit with 7 lighting effect presets
- Large size palm wrist



# SCORPIUS-M20S

RGB GAMING MECHANICAL KEYBOARD



## FEATURES

- Gaming-grade mechanical switch
- Optional plastic or aluminum top cover
- ABS double-shot keycaps
- RGB LED Backlit with 7 lighting effect presets



# SCORPIUS-M22S

RGB LED BACKLIT LOW PROFILE TENKEYLESS  
GAMING MECHANICAL KEYBOARD



## FEATURES

- 16.8 million RGB LED backlit with 5 levels brightness and 8 lighting effects mode adjustment
- Minimalistic SPCC Steel Tenkeyless body with optimized low-profile keycaps design
- Kailh Low-Profile switch
- 512KB Onboard Memory
- Instant onboard Macro and LED lighting recording





# SCORPIUS-M22SIQS

ANALOG INDUCTIVE SWITCH  
GAMING KEYBOARD



## FEATURES

- 0.5 mm Initial trigger point
- Better analog travel curve compare with magnetic switch
- Ten keyless key layout
- Minimalistic floating design
- 8000Hz Polling Rate
- Instant Macro Recording
- 1.8m TYPEA to TYPE C Cable



# SCORPIUS-M22STMR

# TMR SWITCH GAMING KEYBOARD



## FEATURES

- 0.05 mm Initial trigger point provide precise analog control
- Ten keyless key layout
- Minimalistic floating design
- 8000Hz Polling Rate
- Instant Macro Recording
- 1.8m TYPEA to TYPE C Cable



# SCORPIUS-M22VS

MODULAR TENKEYLESS MECHANICAL  
GAMING KEYBOARD



## FEATURES

- Ten keyless key layout
- Gaming-grade mechanical switch
- Minimalistic floating design
- Hot-swappable switch socket
- RGB LED Lighting with 7 lighting effect.
- Instant Macro Recording
- Detachable Type-C cable



# SCORPIUS-M23S

RGB LED BACKLIT GAMING  
MECHANICAL KEYBOARD



## FEATURES

- Compact and minimalistic design
- RGB LED Backlit with 7 lighting effect presets
- Aluminum anodized switch plate
- Low-profile switch and standard mechanical switch compatible
- Detachable USB type-C to USB-A cable





# SCORPIUS-M23VS

MODULAR RGB LIGHTING GAMING  
MECHANICAL KEYBOARD



## FEATURES

- Full size key layout
- Gaming-grade mechanical switch
- Minimalistic floating design
- Hot-swappable switch socket
- RGB LED Lighting with 7 lighting effect.
- Instant Macro Recording
- Detachable Type-C cable



# SCORPIUS-M25S

RGB LED BACKLIT TENKEYLESS  
GAMING MECHANICAL KEYBOARD



## FEATURES

- 16.8 million RGB LED backlit with 5 levels brightness and 7 lighting effects mode adjustment
- 32bit ARM Cortex Processor
- 3 Thumb keys for instant execution
- 2 x High speed USB 2.0 pass-through hub
- Optional detachable numerical pad
- Detachable mini USB to USB-A cable
- Instant onboard Macro and LED lighting recording



# SCORPIUS-M25S-MIX

RGB LED BACKLIT  
GAMING MECHANICAL KEYBOARD



## FEATURES

- 16.8 million RGB LED backlit with 5 levels brightness and 7 lighting effects mode adjustment
- 3 Thumb keys for instant execution
- 2 x High speed USB 2.0 pass-through hub
- Attachable Numpad for left or right side
- Detachable mini USB to USB-A cable



# SCORPIUS-M25S-P

RGB LED BACKLIT

MECHANICAL NUMPAD (MACRO PAD)



## FEATURES

- 16.8 million RGB LED backlit with 5 levels brightness and 7 lighting effects mode adjustment
- Full N-Key Rollover (6-Key / N-Key Rollover options)
- All keys fully programmable
- Attachable with M25S Tenkeyless Mechanical Keyboard (Optional)





# SCORPIUS-M26S

RGB LED BACKLIT  
GAMING MECHANICAL KEYBOARD



## FEATURES

- 16.8 million RGB LED backlit with 5 levels brightness and 7 lighting effects mode adjustment
- 32 bit Arm Cortex processor
- 4M bit onboard memory
- Instant onboard Macro recording
- PC / Game Mode with Windows key disable function



# SCORPIUS-M27S

RGB LED BACKLIT  
GAMING MECHANICAL KEYBOARD



## FEATURES

- 16.8 million RGB LED backlit with various customize lighting effects control
- Instant on-board lighting effect control ( Direction / Speed)
- Instant on-board Macro recording
- PC / Game Mode with Windows key disable function
- RGB LED light strip
- Detachable large size wrist pad



# SCORPIUS-M30S

SWITCHABLE OPTICAL SWITCH  
MECHANICAL GAMING KEYBOARD



## Features

- 16.8 million RGB LED backlit with various customize lighting effects control
- On the fly switchable Red and Blue keystroke feeling
- High performance optical switch
- Independent volume control knob
- Instant on-board Macro recording
- PC / Game Mode with Windows key disable function



# SCORPIUS-M31S

GASKET MOUNT CNC ALUMINUM  
MECHANICAL KEYBOARD



## FEATURES

- 75% key layout
- Compact and minimalistic design
- DIY Hot swappable switch socket
- Gasket mount switch plate with double sound absorbing form
- 4 RGB lighting side bar
- Full CNC aluminum multi-functional rotary button





# SCORPIUS-U9SBL

SINGLE LED BACKLIT  
GAMING MECHANICAL KEYBOARD



## FEATURES

- 5 profile settings / 6 presets LED mode / 5 levels brightness adjustment
- 2 x high speed USB 2.0 pass-through hub
- 4M bit onboard memory
- Headphone (in) and microphone (out) jacks
- PC / Game mode with windows key disabled function



# SCORPIUS-U9SFL

RGB LED BACKLIT  
GAMING MECHANICAL KEYBOARD



## FEATURES

- 16.8 million RGB LED backlit with 5 levels brightness and 8 LED mode adjustment
- 4M bit onboard memory
- 2 x high speed USB 2.0 pass-through hub
- Detachable rubberize surface wrist Pad
- Headphone (in) and microphone (out) jacks
- PC mode / Game mode with windows key disabled feature



# LYNX-W6S/W6S-V1

WIRE HIGH PERFORMANCE GAMING MICE



## FEATURES

- High Performance Pixart 3389 Optical Sensor
- Design specific for right hand user
- Omron D2F7 gaming grade micro switch
- RGB Under-glow lighting effect



# LYNX-W13S

LIGHT WEIGHT WIRE GAMING MOUSE



## FEATURES

- Small size light weight gaming mice under 60g
- Up to 6200 DPI gaming optical sensor
- Logo Single Color LED illumination
- 6 buttons programmable
- Tangle-free USB cable





# LYNX-W13UWB

UWB WIRELESS GAMING MICE



## FEATURES

- Low power consumption
- Stable 8K polling rate performance
- Consist long transmit distance
- Better signal anti-interference



# LYNX-W13W

LIGHT WEIGHT WIRELESS GAMING MOUSE



## FEATURES

- Small size light weight gaming mice under 60g
- 2.4GHz / Bluetooth / USB connectivity
- Up to 12000 DPI gaming optical sensor
- Up to 300 ips and 35g acceleration
- Logo Single Color LED illumination
- 6 buttons programmable
- Tangle-free USB cable



***MODULE***



# LIBRA-37

## TRACKBALL MODULE



## FEATURES

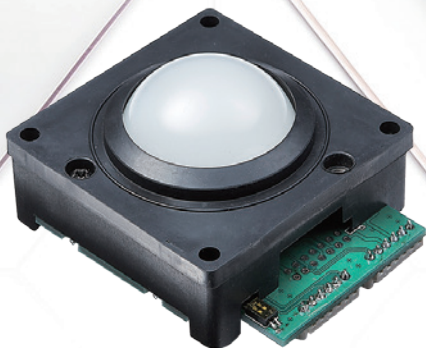
- Intuitive operation, light touch, and precise control
- Built in phenolic-trackball with Ø 38mm / 800 edges per ball revolution for mouse pointer functionality
- High-resolution sensing with phototransistor output.
- Auto-detects to PS/2 or USB interface dependent on host
- AXIS direction adjustable
- Specifically designed for IPC, Military, Medical and OEM applications





# LIBRA-38

## LUMINANT TRACKBALL MODULE



### FEATURES

- Intuitive operation, light touch, and precise control
- Built in trackball with Ø 38mm / 800 edges per ball revolution for mouse pointer functionality
- High-resolution sensing with phototransistor output
- Translucent trackball with multi-colored back lighting
- Auto-detects to PS/2 or USB interface dependent on host
- AXIS direction adjustable
- Specifically designed for IPC, Military, Medical and OEM applications



# SCORPIUS-M13SFL

RGB LED BACKLIT ULTRA-SLIM  
MECHANICAL KEYBOARD MODULE



## FEATURES

- Omron signature Ultra-Low profile mechanical switch
- Windows / Mac mode function key support.
- RGB LED backlit with lighting effect and brightness control
- Macro Instant Recording (no AP required)
- Gaming Cluster with Anti-Ghosting Capability
- PC / Game Mode with Windows Key Disabled Function
- Macro can be recorded on any key under Game MODE, except FN / WIN Key / ESC keys



# LIBRA-Q21

## OPTICAL TRACKBALL MODULE



## FEATURES

- 14 Ø mm optical trackball
- 1000 dpi optical resolution with 2 mouse buttons
- High polished surface is unaffected by accumulation of dusts
- Flat cable available



***OFFICE***





# LIBRA-P5

## WIRELESS CONTROLLER MOUSE



## FEATURES

- 2.4G wireless connectivity mode
- NANO receiver dongle for easy carry
- Built-in laser pointer; 5 buttons, 1 thumb joystick and 1 laser trigger
- Plug & play; omni-directional cursor control
- Operation without direction limitation
- Low power consumption
- 2 X AAA battery



# SCORPIUS-M10T

HIGH PERFORMANCE TENKEYLESS  
MECHANICAL KEYBOARD



## FEATURES

- Tenkeyless sleek compact design with high performance mechanical switch
- N key rollover and anti-ghosting functions
- 3 ways cable management
- Multi-Media Keys for volume control, play/pause, and skip tracks
- 1.8 mm detachable mini USB cable to USB-A



# SCORPIUS-N4

WIRED NUMERICAL MOUSE KEYPAD



## FEATURES

- Standard asynchronous 10-keys keypad
- Scissor-type key switch
- Embedded optical mouse function
- 3 buttons and wheel mouse function
- 800 dpi resolution
- USB available



# SCORPIUS-N4WL

WIRELESS NUMERICAL MOUSE KEYPAD



## FEATURES

- 2.4G wireless connectivity mode
- Mode Switch between mouse-keypad
- Precision-engineered scissor key structure
- 1000 DPI optical sensor with standard mouse functions
- Low power consumption with smart power saving function
- 512KB onboard memory, plug and play while switching to different PC
- 2 X AAA battery





# LYNX-R19R

3-BUTTONS OPTICAL MOUSE



## FEATURES

- Fashion and modern design
- Retractable USB cable
- 1000 DPI optical resolution with motion detection up to 21 IPS



# TAB-MATE CONTROLLER

WIRELESS CONTROLLER MOUSE



## FEATURES

- Fashionable and modern design
- Ergonomics design
- Bluetooth 3.0 technology handheld Device, operation distance up to 10M
- 3 real Keys and Scroll Wheel with push button function
- 4 switchable mode, each key have 4 different functions.
- 1 x AA battery



# SCORPIUS-U9BL

HIGH PERFORMANCE SINGLE LED  
BACKLIT MECHANICAL KEYBOARD



## FEATURES

- 4 levels LED brightness control
- 2 x High speed USB 2.0 pass-through hub
- Headphone (in) and Microphone (out) Jacks
- N key rollover and anti-ghosting functions
- Detachable rubberize surface wrist pad
- Multi-Media Keys for volume control, play/pause, and skip track



# SCORPIUS-U9N

HIGH PERFORMANCE MECHANICAL KEYBOARD



## FEATURES

- Sleek design with high performance mechanical switch
- Special rubberize coating
- Multi-Media Keys for volume control, play/pause, and skip track
- N key rollover and anti-ghosting functions
- Detachable rubberize surface wrist pad





***INDUSTRIAL***



# SCORPIUS-32

HIGH PERFORMANCE NUMERICAL  
MECHANICAL KEYPAD



## FEATURES

- Compact size design with 32 keys layout
- Mechanical key switches



# LIBRA-35

OPTICAL TRACKBALL MOUSE WRIST PAD



## FEATURES

- 22 mm opto-mechanical trackball with 3 standard mouse buttons
- 1000 DPI optical sensor
- Soft cushion for wrist support



# LIBRA-35T

TOUCHPAD DEVICE



## FEATURES

- 55 x 33mm touchpad with 2 standard mouse button
- Up to 3000 DPI
- Smart Edge feature for ease with dragging functions
- Insensitive to moisture and dirt
- Soft cushioning for wrist support





# LIBRA-90

OPTICAL TRACKBALL MOUSE



## FEATURES

- 46mm large size trackball with extra-smooth special coating
- Ergonomic design with extra wrist support
- Up to 800 DPI optical sensor



# SCORPIUS-G6TL

PREMIUM INDUSTRIAL SINGLE LED BACKLIT  
TRACKBALL MECHANICAL KEYBOARD



## FEATURES

- Full size keyboard with build in optical trackball mouse.
- 46mm large size trackball with extra-smooth special coating
- 3 levels DPI adjustment, up to 1600 DPI  
( 600 / 100 / 1600)
- Trackball disabled function
- Media keys for volume control, play pause and skip tracks



# SCORPIUS-K3

MINIMALISTIC LOW PROFILE KEYBOARD



## FEATURES

- Slim size with low profile keycaps design
- High quality rubber membrane key switch
- Excellent tactile key stroke feeling
- 4 LED indicators (Num lock, Caps lock, Scroll lock, Fn)



# SCORPIUS-K3NT

## MULTIMEDIA TRACKBALL KEYBOARD



## FEATURES

- Slim design with 1 ACPI hotkey
- With a 19mm trackball and 3 standard mouse buttons
- 18 Multimedia hotkeys
- USB X1 HUB available ( USB interface only)
- 4 LED indicators (Fn ,NumLock, CapsLock, ScrollLock)





# SCORPIUS-P6

1U RACKMOUNT TOUCHPAD KEYBOARD



## FEATURES

- Slim size, fit into most 1U rack
- Built-in 55x33mm touchpad
- 3 standard mouse buttons
- Membrane style key switch



# SCORPIUS-P7

1U RACKMOUNT TRACKBALL KEYBOARD



## FEATURES

- Slim size, fit into most 1U rack
- Built-in 14mm optical trackball
- 800 DPI optical sensor
- 2 standard mouse buttons
- Membrane style key switch



# LYNX-R15

OPTICAL TRACKBALL MOUSE  
WITH SCROLL WHEEL



## FEATURES

- 46mm large size trackball with extra-smooth special coating
- Ergonomic design with extra wrist support
- Up to 800 DPI optical sensor
- Left/right buttons and scroll wheel design for precise control
- Extra-smooth special coating trackball



# LYNX-R15W

2.4GHZ WIRELESS OPTICAL TRACKBALL MOUSE



## FEATURES

- 46mm large size trackball with extra-smooth special coating
- Ergonomic design with extra wrist support
- Up to 5 meters operation range in open space
- Up to 2000 DPI optical sensor
- Rechargeable battery, up to 120 continuous operation time
- Left/right buttons and scroll wheel design for precise control





# LYNX-W10

OPTICAL TRACKBALL MOUSE



## FEATURES

- 46mm large size trackball with extra-smooth special coating
- 3 levels DPI adjustment, up to 1600 DPI ( 600 / 100 / 1600)
- Ergonomic design with extra wrist support
- Left/right buttons and scroll wheel design for precise control
- Trackball disabled function